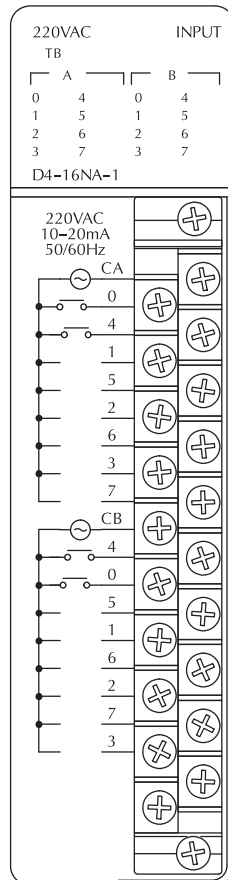
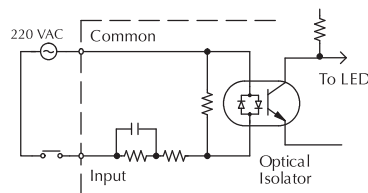
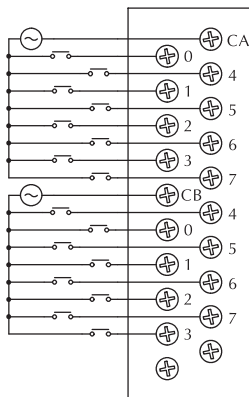
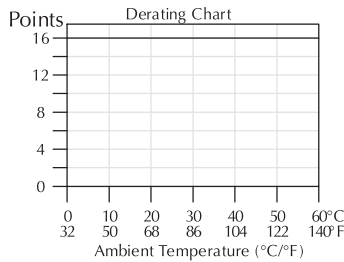


# AC and AC/DC Input Modules

D4-16NA-1 AC Input <--->	
<b>Inputs per Module</b>	16
<b>Commons per Module</b>	2 (isolated)
<b>Input Voltage Range</b>	187-238VAC
<b>Peak Voltage</b>	265VAC
<b>AC Frequency</b>	47-63Hz
<b>ON Voltage Level</b>	>150V
<b>OFF Voltage Level</b>	<40V
<b>Input Impedance</b>	22KΩ
<b>Input Current</b>	10.0mA @ 220VAC
<b>Minimum ON Current</b>	7mA
<b>Maximum OFF Current</b>	2mA
<b>Base Power Required 5V</b>	150mA max
<b>OFF to ON Response</b>	5-30ms
<b>ON to OFF Response</b>	10-50ms
<b>Terminal Type (included)</b>	Removable (D4-16IOCON)
<b>Status Indicators</b>	Logic side
<b>Weight</b>	9.2oz. (260g)

See the Terminal Blocks & Wiring Solutions section in this catalog for part numbers of ZIPLink cables and terminal blocks compatible with this module.



D4-16NE3 AC/DC Input <--->	
<b>Inputs per Module</b>	16 (sink/source)
<b>Commons per Module</b>	2 (isolated)
<b>Input Voltage Range</b>	10.2-26.4VAC/VDC
<b>Peak Voltage</b>	37.5VAC/VDC
<b>AC Frequency</b>	47-63Hz
<b>ON Voltage Level</b>	>9.5V
<b>OFF Voltage Level</b>	<3.0V
<b>Input Impedance</b>	3.2 KΩ @ 12V 2.9 KΩ @ 24V
<b>Input Current</b>	3.8mA @ 12V 8.3mA @ 24V
<b>Minimum ON Current</b>	4mA
<b>Maximum OFF Current</b>	1.5mA
<b>Base Power Required 5V</b>	150mA max
<b>OFF to ON Response</b>	5-40ms
<b>ON to OFF Response</b>	10-50ms
<b>Terminal Type (included)</b>	Removable (D4-16IOCON)
<b>Status Indicators</b>	Logic side
<b>Weight</b>	8.8oz. (250g)

See the Terminal Blocks & Wiring Solutions section in this catalog for part numbers of ZIPLink cables and terminal blocks compatible with this module.

