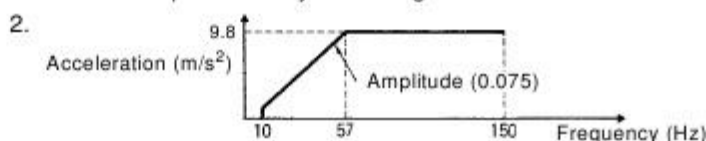


2-6 Unit Specifications

2-6-1 Power Supply Units

| Item | CQM1-PA203 | CQM1-PA206 | CQM1-PA216 | CQM1-PD026 |
|-----------------------------|---|--|---------------------------------------|---|
| Supply voltage | 100 to 240 VAC, 50/60 Hz | | 100 or 230 VAC (selectable), 50/60 Hz | 24 VDC |
| Operating voltage range | 85 to 264 VAC | | 85 to 132 VAC or 170 to 264 VAC | 20 to 28 VDC |
| Operating frequency range | 47 to 63 Hz | | | --- |
| Power consumption | 60 VA max. | 120 VA max. | | 50 W max. |
| Inrush current | 30 A max. | | | |
| Output capacity | 5 VDC: 3.6 A (18 W) | 5 VDC: 6 A 24 VDC: 0.5 A (30 W total) | | 5 VDC: 6 A (30 W) |
| Insulation resistance | 20 M Ω min. (at 500 VDC) between AC external terminals and GR terminals (see note 1) | | | 20 M Ω min. (at 500 VDC) between AC external terminals and GR terminals (see note 1) |
| Dielectric strength | 2,300 VAC 50/60 Hz for 1 min between AC external and GR terminals, (see note 1) leakage current: 10 mA max. 1,000 VAC 50/60 Hz for 1 min between DC external and GR terminals, (see note 1) leakage current: 20 mA max. | | | |
| Noise immunity | 1,500 Vp-p, pulse width: 100 ns to 1 μ s, rise time: 1 ns (via noise simulation) | | | |
| Vibration resistance | 10 to 57 Hz, 0.075-mm amplitude, 57 to 150 Hz, acceleration: 9.8 m/s ² (see note 2) in X, Y, and Z directions for 80 minutes each (Time coefficient; 8 minutes \times coefficient factor 10 = total time 80 minutes) | | | |
| Shock resistance | 147 m/s ² (21.8 m/s ² for Contact Output Units) 3 times each in X, Y, and Z directions | | | |
| Ambient temperature | Operating: 0° to 55°C Storage: -20° to 75°C (except battery) | | | |
| Humidity | 10% to 90% (with no condensation) | | | |
| Atmosphere | Must be free from corrosive gasses | | | |
| Grounding | Less than 100 Ω | | | |
| Enclosure rating | Mounted in a panel | | | |
| Weight | 5 kilograms max. | | | |
| Dimensions (without cables) | 219 to 443 \times 110 \times 107 mm (W \times H \times D) | | | |

Note 1. Disconnect the LG terminal of the Power Supply Unit from the GR terminal when performing insulation and dielectric strength tests. If the tests are repeatedly performed with the LG and GR terminals short-circuited, the internal components may be damaged.



2-6-2 CPU Unit Specifications

| Item | CQM1-CPU11-E/21-E | CQM1-CPU41-EV1 | CQM1-CPU42-EV1 | CQM1-CPU43-EV1/44-EV1 |
|----------------------|--|----------------|----------------|-----------------------|
| Control method | Stored program method | | | |
| I/O control method | Cyclic scan with direct output; immediate interrupt processing | | | |
| Programming language | Ladder diagram | | | |