

PANELMATE® 500



ELECTRONIC OPERATOR INTERFACE



Cutler-Hammer IDT

EATON

The PanelMate® Series 500 is a new concept for small machine control...a low cost electronic operator interface with a new dimension in capabilities — intelligent onboard operator guidance.

YOU NEED A LOW-COST OPERATOR INTERFACE

The PanelMate® 500 Delivers.

THE PANELMATE SERIES 500 -

**SO VERSATILE,
SO INTELLIGENT,
SO COST-EFFECTIVE,
YOU CAN PUT THEM
EVERYWHERE.**

IT STANDS TO REASON THAT THE BEST
PERFORMING SMALL OPERATOR
INTERFACE WOULD BE PART OF THE
BEST LINE OF OPERATOR INTERFACE
PRODUCTS AVAILABLE — PANELMATE.
AT LESS THAN \$750, THE PANELMATE
500 IS AN UNMATCHED COMBINATION
OF PRICE AND PERFORMANCE.

A NEW CHOICE FOR SMALL MACHINE BUILDERS.

Until now, machine builders needing a low cost operator interface had few choices — hardwired pushbutton panels or perhaps a message display-based unit with some limited function key capabilities. The PanelMate Series 500 gives you a new choice — a low cost unit that is powerful enough to fully address all five critical phases of machine operation.

The PanelMate Series 500's appeal isn't limited to just its power. Everything about the 500 is designed for versatility and machine builders' confidence.

- IMPROVE PRODUCTIVITY.

The PanelMate Series 500 greatly reduces PLC logic requirements, saving development and integration time. The Virtual Mentor™ guides novice operators through the system, providing step-by-step assistance with startup and shutdown sequences, and even troubleshooting and clearing machine faults.

- EASY-TO-CUSTOMIZE FACEPLATE.

Function keys are easily relabeled and are sealed under a removable keypad overlay. For a complete custom look, machine builders can request unique faceplates to match their applications.

-TOTALLY FLEXIBLE WINDOWS®-BASED CONFIGURATION.

Design your application to operate exactly the way you want, with WYSIWYG confidence. The 500 supplies the tools, you supply the know-how using the 500's easy, fill-in-the-blank configuration format.

- A PROVEN, EXPERIENCED SUPPLIER.

The PanelMate Series 500 is a product of the same minds that invented PanelMate, the first electronic operator station. Since 1986, PanelMate products have led the charge for easier, faster, better ways to help machine builders and users operate their PLC-based machines. Today, the PanelMate Series 500 takes small machine builders to the next step: total machine operation.

A PRICE TAG STARTING UNDER \$750.

For the cost of a plain message display and a couple of pushbuttons, you can buy a PanelMate 500 capable of completely revolutionizing the way you operate your machine.

INTELLIGENT, ONBOARD OPERATOR GUIDANCE.



Using a new technology, the PanelMate Series 500's available Virtual Mentor™ interactively leads your operator through all five critical machine phases, eliminating confusion and increasing production. Here's how:

STARTUP — The PanelMate 500 leads the operator through the startup procedure and allows him to initiate any operation. Virtual Mentor guidance assures all procedures are followed in the correct sequence. On-screen, text-based templates or definable function keys replace hardwired devices.

RUN — The 500 monitors display the machine status and production process. Text-based message displays, readout and indicator templates keep the operator informed.

CHANGE — The 500 leads the operator through the change procedures and allows him to safely change allowable parameters of machine operation. The 500's Virtual Mentor displays available choices for initiating a change and ensures all required procedures are followed.

PROBLEMS/TROUBLESHOOTING — The 500 alarms the symptoms, leads the operator to the cause and through problem resolution, and then initiates normal operation. Using Virtual Mentor Intelligence, operator responses are combined with PLC register data to determine the cause of a problem. Once diagnosed, the 500 guides the operator in restoring normal operation.

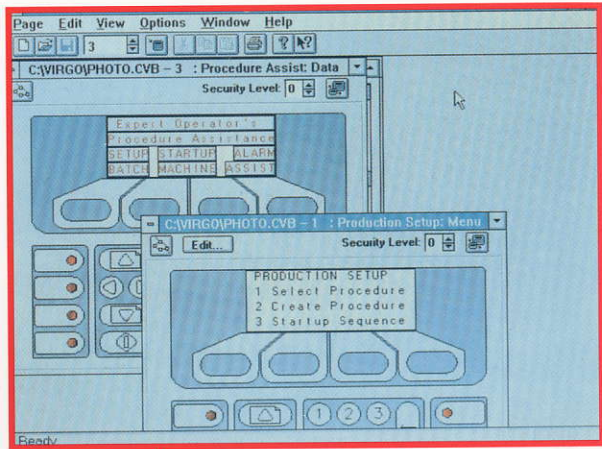
SHUTDOWN — The 500 confirms operator shutdown decisions and leads him through the appropriate procedures.

Available Virtual Mentor™ provides complete guided operator assistance.



Full alarm capabilities using either LEDs or text-based messages.

Choice of displays:
2- or 4-line LCD
2- or 4-line VFD

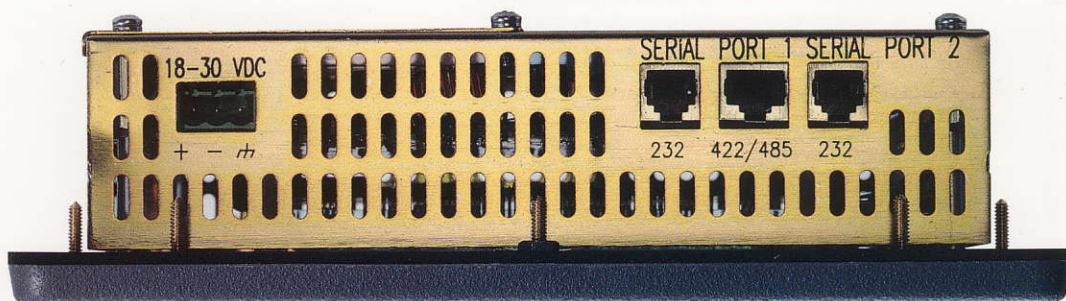


WYSIWYG (What You See Is What You Get) Windows-based software provides easy fill-in-the-blank configuration, and complete documentation of your system.

Replaces hardwired indicator lights with up to 8 built-in tri-color (red, yellow, green) LED indicators, plus as many text-based, template-style indicators as you need.

Replaces hardwired pushbuttons using dedicated buttons, plus as many text-based template-style pushbuttons as you need.

Faceplate allows customization of labels for unique appearance or specialized functions.



DISPLAY AND ELECTRONICS SPECIFICATIONS

Displays

- LIQUID CRYSTAL DISPLAY WITH 2X20 CHARACTER RESOLUTION
- LIQUID CRYSTAL DISPLAY WITH 4X20 CHARACTER RESOLUTION
- VACUUM FLORESCENT DISPLAY WITH 2X20 CHARACTER RESOLUTION
- VACUUM FLORESCENT DISPLAY WITH 4X20 CHARACTER RESOLUTION

LED Indicator Lights

TRI-COLOR LEDS: RED, YELLOW AND GREEN

- FOUR LEDS ON 2X20 MODELS
- EIGHT LEDS ON 4X20 MODELS

Operator Entry

- 4 MEMBRANE SOFT FUNCTION KEYS
- 8 RELABELABLE MEMBRANE FUNCTION KEYS
- 0 TO 9, +, -, *, NUMERIC ENTRY KEYPAD
- NEXT PAGE, PREVIOUS PAGE, LEFT, RIGHT AND HOME PAGE NAVIGATION KEYS

Hardware

FULLY ASSEMBLED FOR EASY PANEL MOUNT AND SERVICE

- THERMOSET POLYESTER/FIBERGLASS BEZEL
- ELECTRONICS MODULE WITH REMOVEABLE MEMBRANE KEYPAD AND INTEGRAL DISPLAY

External Connections

SERIAL PORTS: ONE SERIAL PORT IS STANDARD ON 2X20 DISPLAY MODELS. TWO SERIAL PORTS ARE STANDARD ON 4X20 DISPLAY MODELS.

- SERIAL PORT 1: SELECTABLE RJ11 FOR RS232 COMMUNICATION OR RJ45 FOR RS422 AND RS485-2 COMMUNICATION, 110 TO 19,200 BAUD, PERMITTING PLC BRAND-SPECIFIC PROTOCOL COMMUNICATION
- SERIAL PORT 2: RJ11 CONNECTION FOR RS232 COMMUNICATION PERMITTING COMMUNICATION TO SERIAL PRINTER
- ACCELERATI/ON OPTION: DIRECT CONNECTION TO ALLEN-BRADLEY'S DATA HIGHWAY™, DATA HIGHWAY PLUS™ OR REMOTE I/O™
- GENIUS I/O OPTION: DIRECT CONNECTION TO GE FANUC GENIUS NETWORK
- BACPAC™ OPTION: PORTABLE FLASH MEMORY CARTRIDGE FOR DOWNLOADING OF CONFIGURATIONS
- MODBUS PLUS OPTION: DIRECT CONNECTION TO MODICON'S MODBUS PLUS NETWORKS

ENVIRONMENT

System NEMA Class

- DESIGNED FOR NEMA 4, NEMA 4X OR NEMA 12 INSTALLATIONS WHEN PROPERLY MOUNTED IN A CORRESPONDINGLY-RATED ENCLOSURE

System Ambient Temperature

- OPERATING: 0-50° C
- NON-OPERATING: -20-60° C

System Vibration

- OPERATING: 2G AT 10-500 HZ
- NON-OPERATING: 2G AT 10-500 HZ

Relative Humidity

- 20-85% NONCONDENSING

System Shock

- OPERATING: 15G
- NON-OPERATING: 30G

Altitude

- OPERATING: 10,000 FEET ABOVE SEA LEVEL
- NON-OPERATING: 30,000 FEET ABOVE SEA LEVEL

Emissions

- CISPR 22 CLASS A-RADIATED AND CONDUCTED

Noise Immunity

- IEC 801-2, 3, 4, 6, 8

OTHER

Power Supply

- VOLTAGE: 18-30 VDC
- CONSUMPTION: 8 WATTS, 12 WATTS WITH OPTIONAL COMMUNICATION INTERFACE BOARD

Equipment Heat Output

- 8 WATTS (28.8 BTU/HR)
- 12 WATTS (43.2 BTU/HR) WITH OPTIONAL COMMUNICATION INTERFACE BOARD

Certifications

- UL LISTED
- CSA LISTED
- CE MARK — AVAILABLE, CONSULT FACTORY

Dimensions/Weight

	INCHES	(MM)
• WIDTH:	8.83	(224.28)
• HEIGHT:	7.63	(193.80)
• DEPTH:	3.23	(82.04)
• WEIGHT:	5 LBS.	



Cutler-Hammer IDT

173 Heatherdown Drive
Westerville, OH 43081
614 / 882-3282
FAX: 614 / 895-7111

MK-ML047-00

The Eaton logo consists of the word 'EATON' in a bold, sans-serif font. The letter 'O' is stylized with a dot in the center, resembling a target or a specific design element.

PanelMate is a registered trademark of Cutler-Hammer IDT, Inc. Virtual Mentor is a trademark of Cutler-Hammer IDT, Inc. Windows is a registered trademark of Microsoft Corp. Eaton is a trademark of and used under license from Eaton Corporation, U.S.A. © 1996, Cutler-Hammer IDT, Inc. All Rights Reserved.