

series Q-03 directional control valve



536 TOWNSHIP LINE ROAD
FLUID TECHNOLOGY ANNEX
BLUE BELL, PENNSYLVANIA 19422
Tel: 215.643.0617
Fax: 216.643.4017
sales@doubleahydraulics.com
www.doubleahydraulics.com

4500 psi, 21 Gpm max
wet armature solenoid operated
four land spool



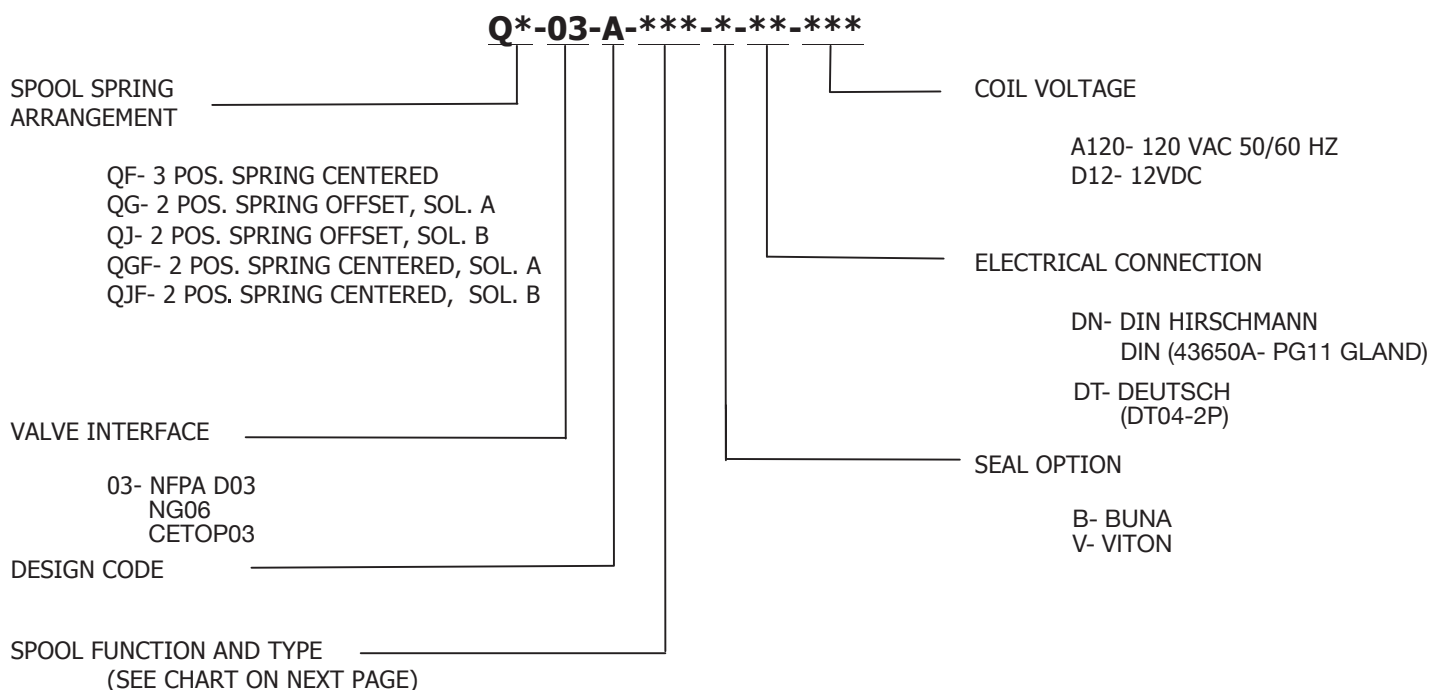
Series Q-03 directional control valve

Specifications

MAXIMUM OPERATING PRESSURE		RATED FLOW CAPACITY	MOUNTING BOLTS	VISCOSITY RANGE	TEMPERATURE RANGE	FLUID CLEANLINESS	WEIGHT
P,A,B PORTS	T PORT	P,A,B,T PORTS	10-24 X 2"	60-1800 SSU	-22 TO 176F	20/18/15 Or Better (ISO 4460)	Single Solenoid 3.5 lbs
4500 psi	2300 psi	21 gpm (DC) 16 gpm (AC)	45-60 inch-#				Double Solenoid 4.6 lbs

SOLENOID COILS													
120 VAC Nominal		12 VDC		Response Time (ms)			Switching Frequency		Intrusion Protection		Maximum Surface Temp		
50 Hz	99-121 VAC	10.8-13.2 VDC	30 W	AC	On 10-20	Off 15-40	AC	7,200 cycles/hr	Connector DIN (DN)	IP 65	AC	350 F	
60 Hz	108-132 VAC			DC	25-45	10-25	DC	15,000 cycles/hr	DEUTSCH (DT)	IP 69	DC	300 F	

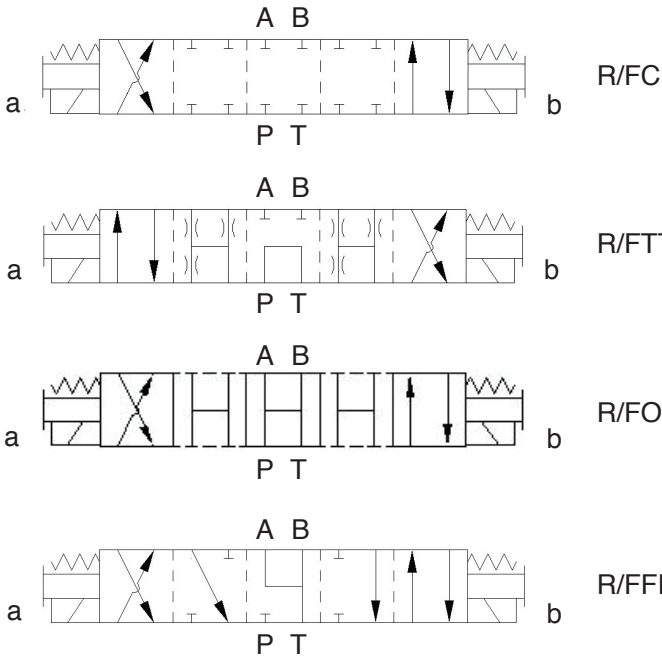
Ordering Information



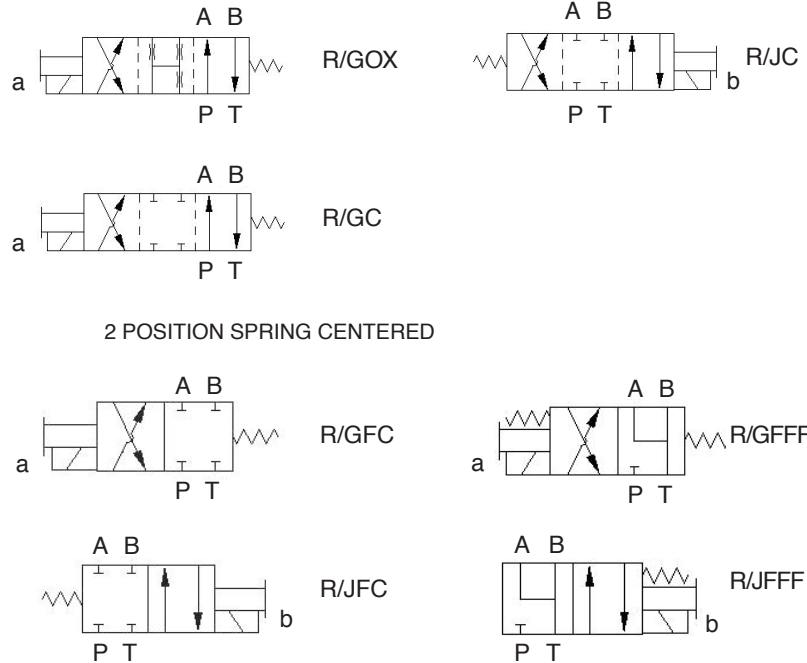
Spool Configuration



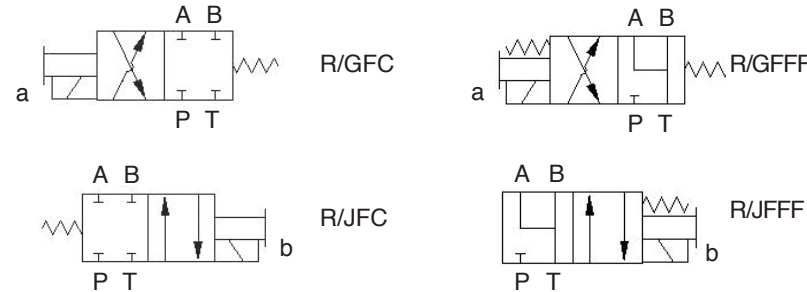
3 POSITION SPRING CENTERED



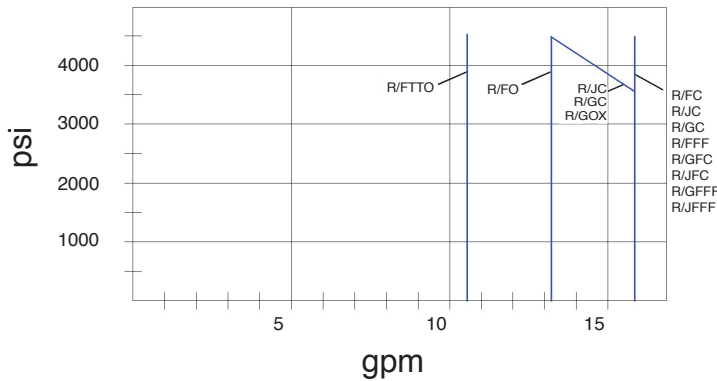
2 POSITION SPRING OFFSET



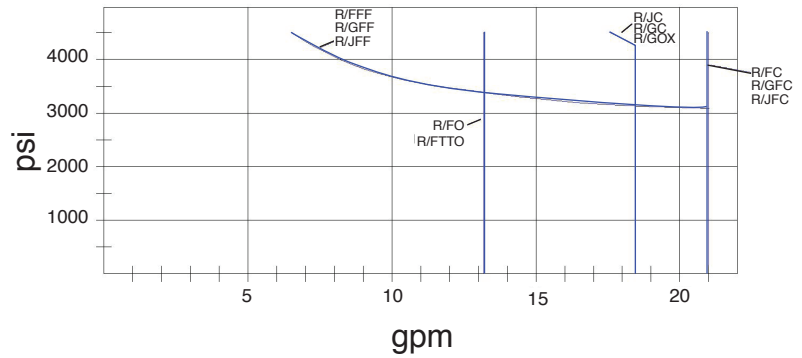
2 POSITION SPRING CENTERED



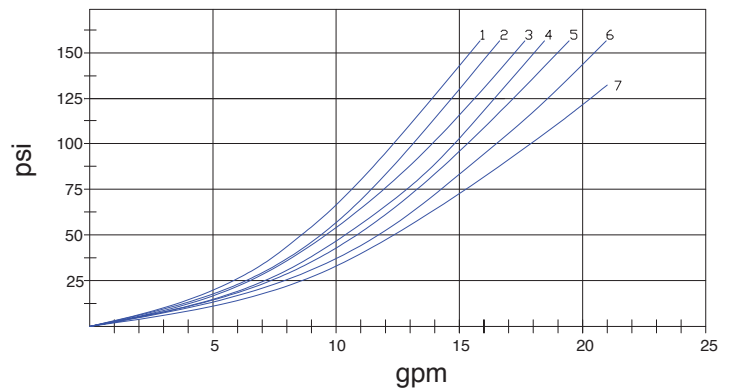
Switching Power Limits
A120 Coil



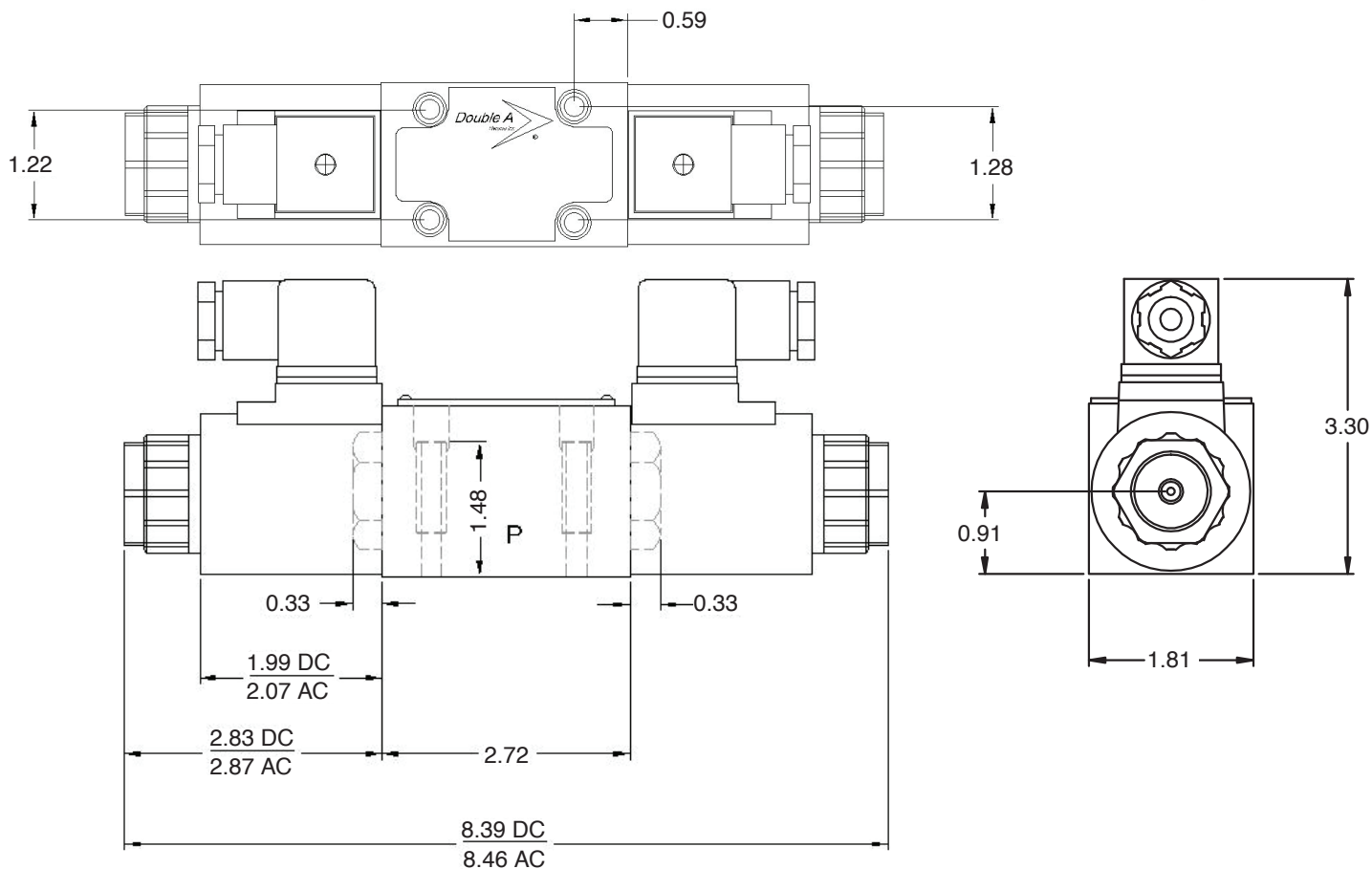
Switching Power Limits
12 VDC Coils



Pressure Drop
41 cSt @ 50F (187 SSU)



Flow versus Pressure Drop				
Flow Direction				
SPOOL	P TO A	P TO B	A TO T	B TO T
R/FC	3	3	5	5
R/FTTO	1	1	4	4
R/FO	6	7	6	6
R/FFF	5	5	6	5
R/GOX	5	5	3	5
R/GC	2	2	3	3
R/JC	2	2	3	3
R/GFC	-	3	3	-
R/JFC	3	-	-	3
R/JFFF	-	5	6	-
R/GFFF	5	-	-	5



DT CONNECTOR VALVE

